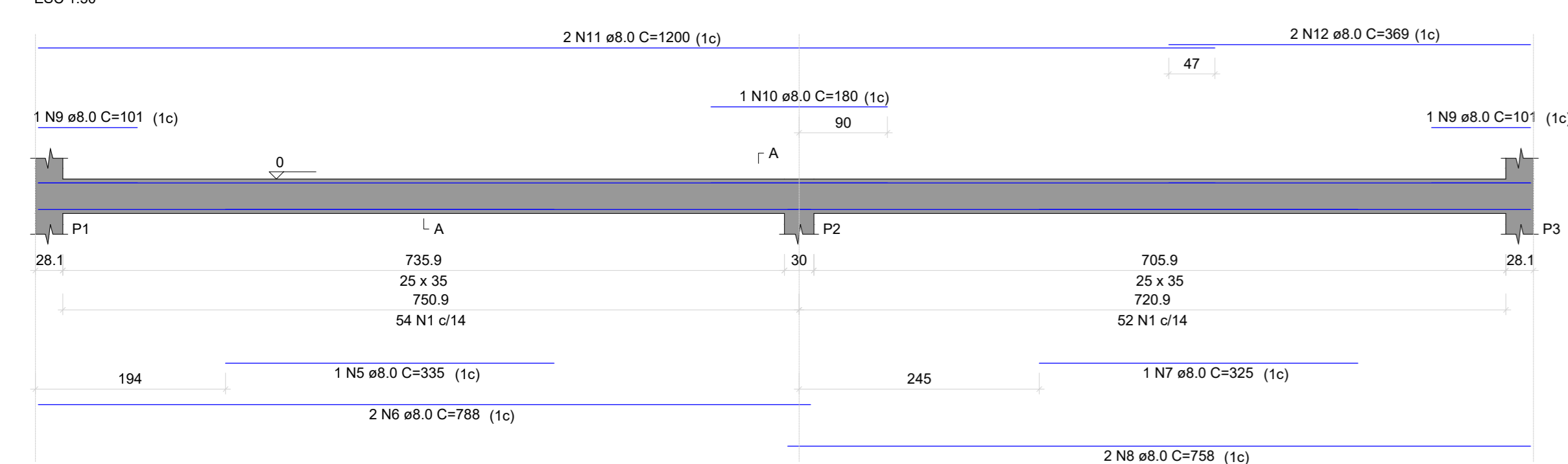
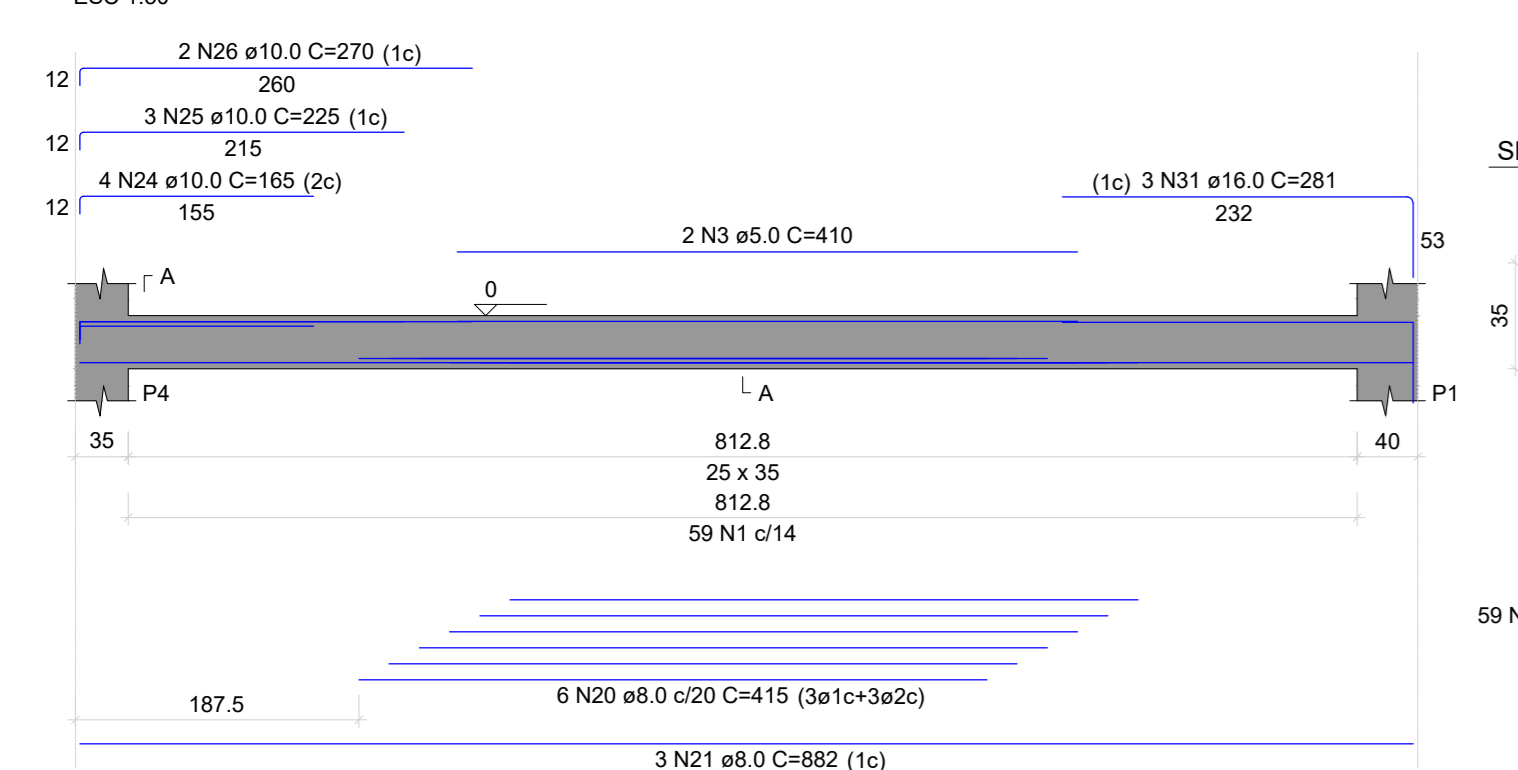


Vigas Baldrame

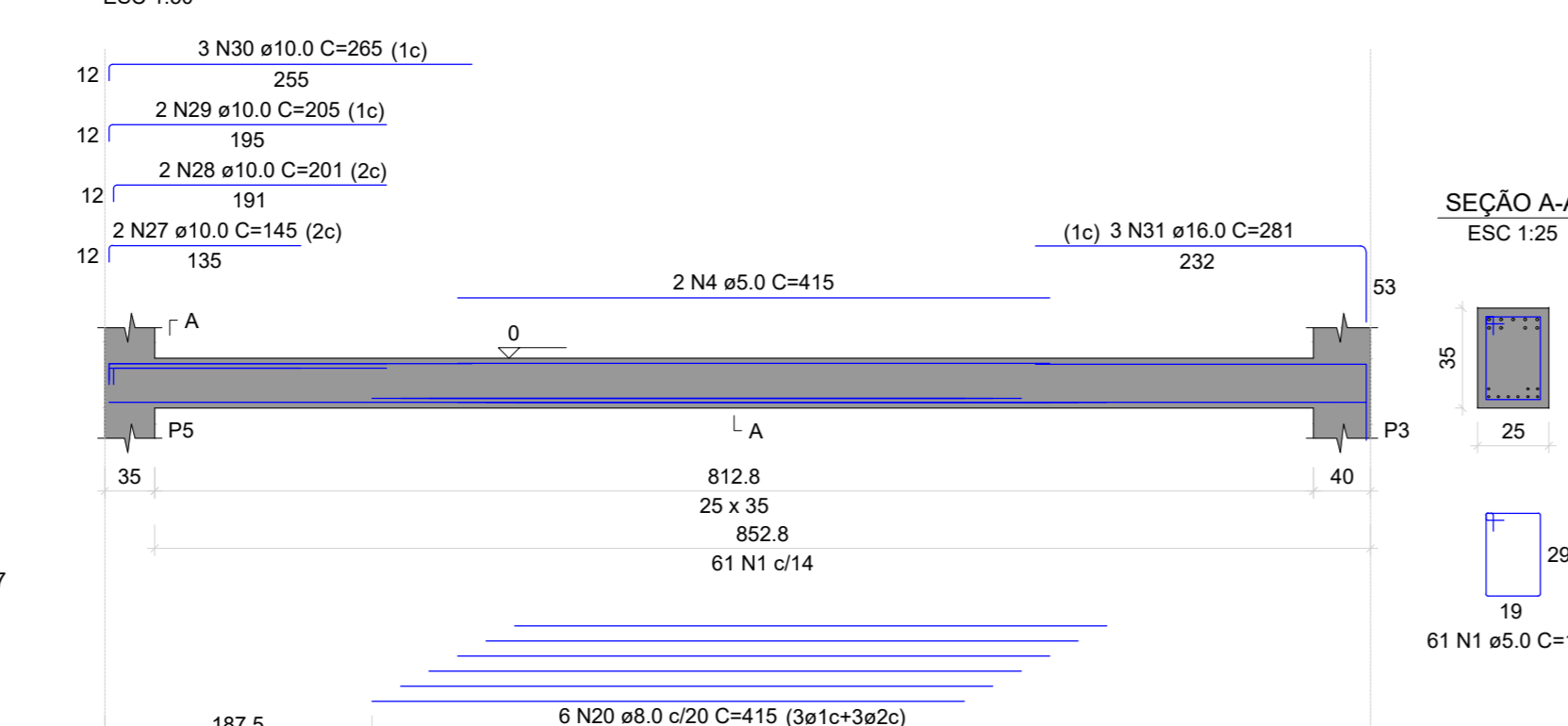
VB1



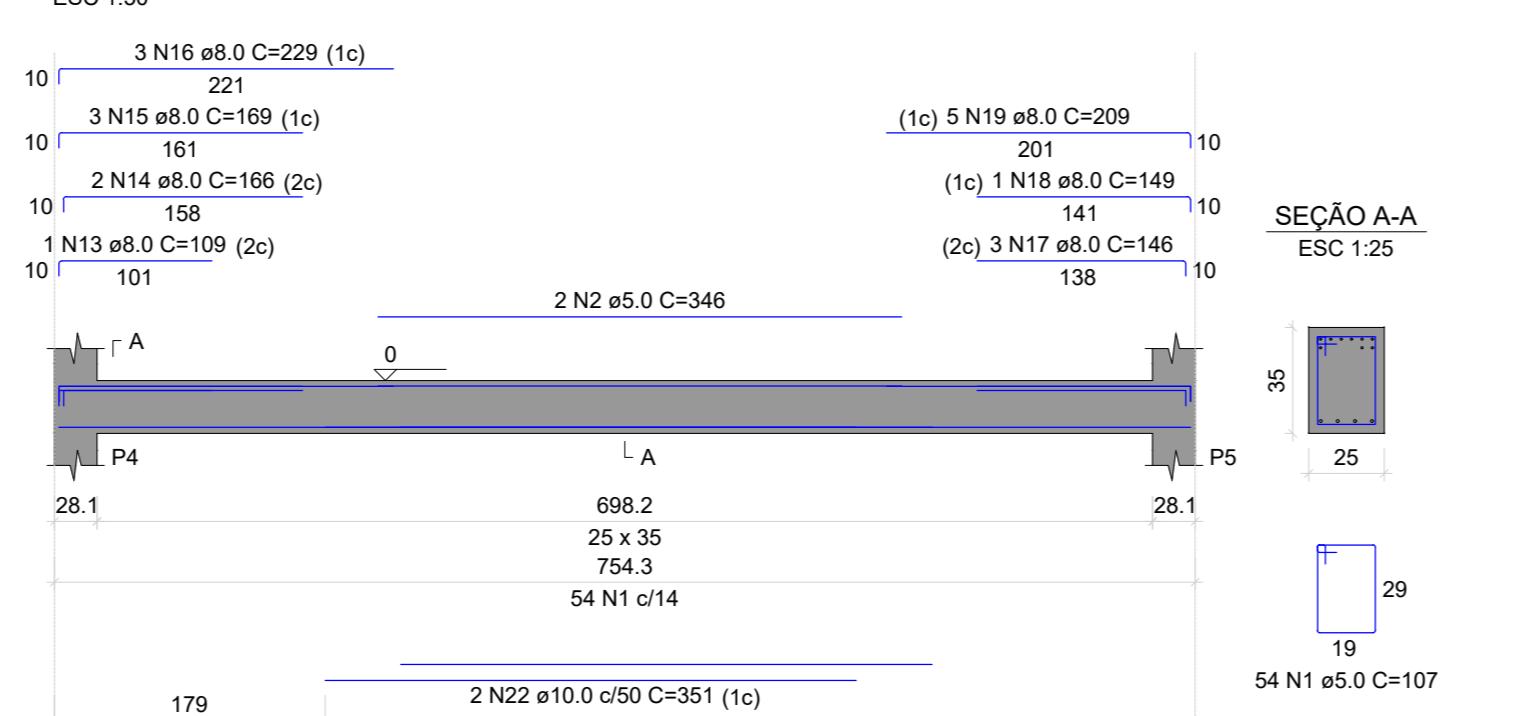
VB3



VB4



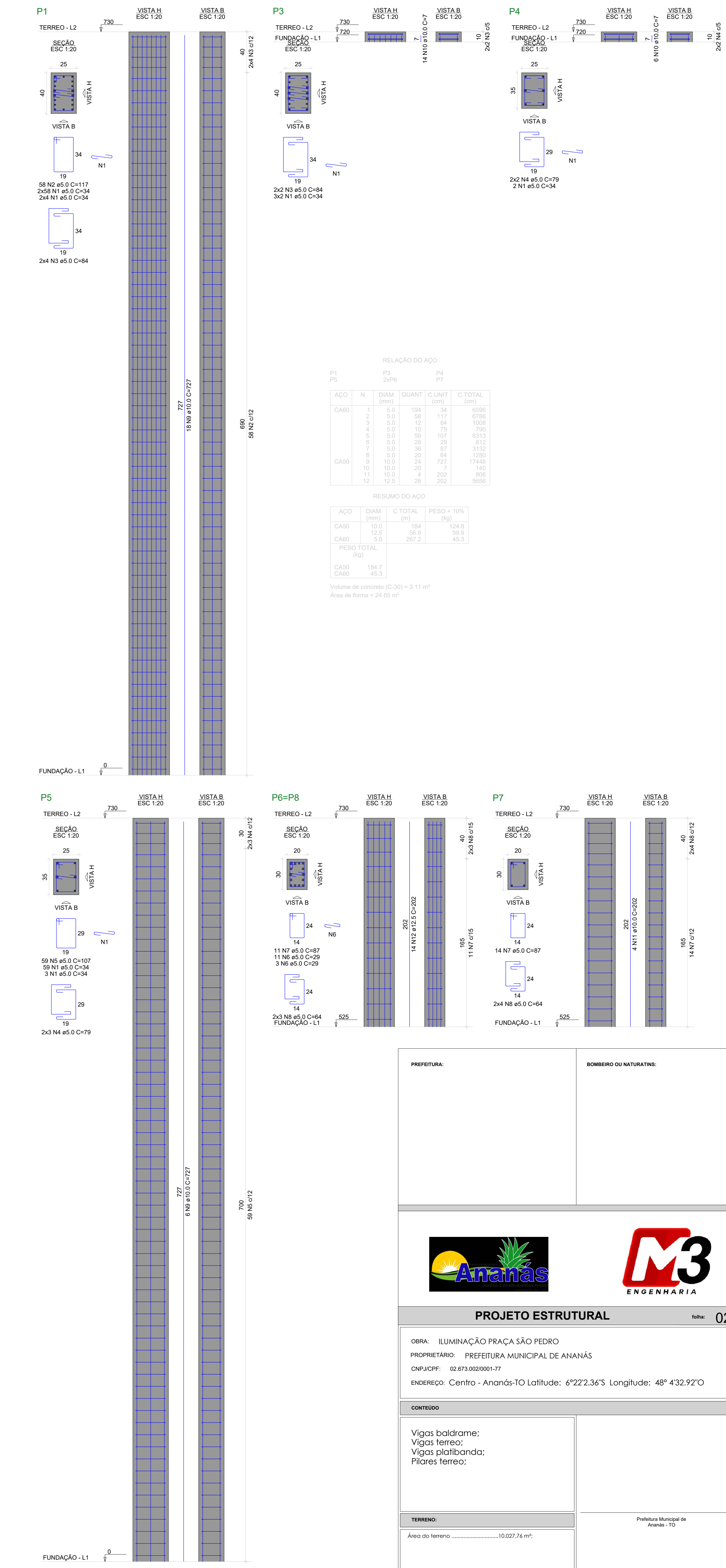
VB2



RELAÇÃO DO AÇO

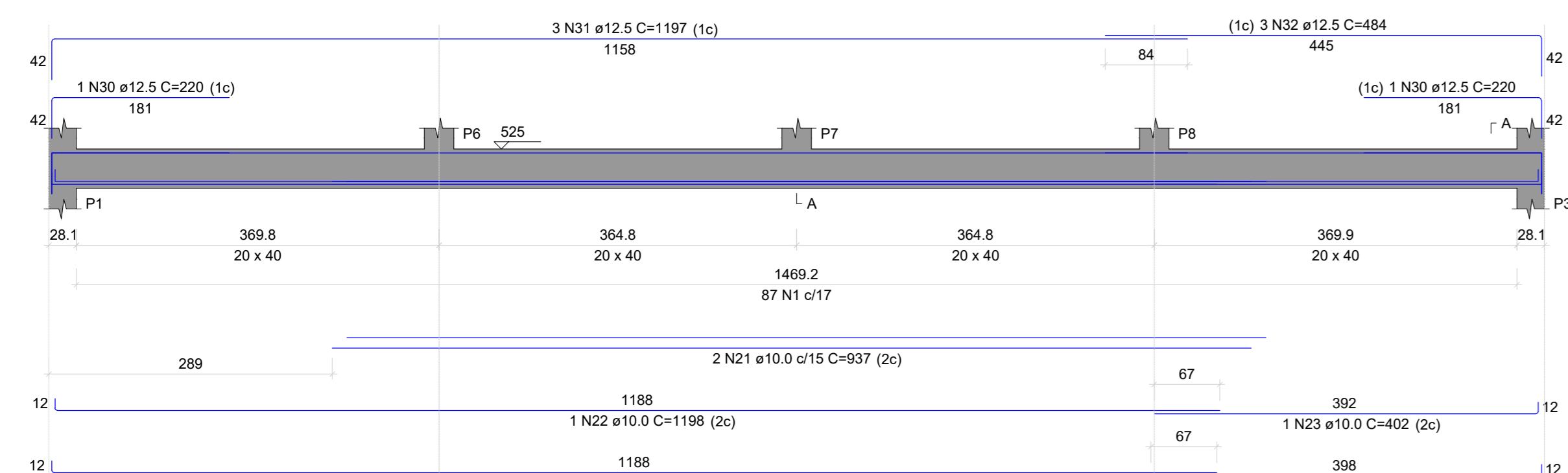
CASO	N	DIAM (mm)	QUANT	C.UMET (cm)	C.TOTAL (cm)
1	2	8.0	2	346	692
1	3	8.0	2	415	830
1	4	8.0	2	329	658
1	5	8.0	2	798	1596
1	6	8.0	1	190	190
1	7	8.0	1	190	190
1	8	8.0	2	359	718
1	9	8.0	2	359	718
1	10	8.0	2	359	718
1	11	8.0	2	359	718
1	12	8.0	2	359	718
1	13	8.0	2	359	718
1	14	8.0	2	359	718
1	15	8.0	2	359	718
1	16	8.0	2	359	718
1	17	8.0	2	359	718
1	18	8.0	2	359	718
1	19	8.0	2	359	718
1	20	8.0	2	359	718
1	21	8.0	2	359	718
1	22	8.0	2	359	718
1	23	8.0	2	359	718
1	24	8.0	2	359	718
1	25	8.0	2	359	718
1	26	8.0	2	359	718
1	27	8.0	2	359	718
1	28	8.0	2	359	718
1	29	8.0	2	359	718
1	30	8.0	2	359	718
1	31	8.0	2	359	718

Pilares Terreo

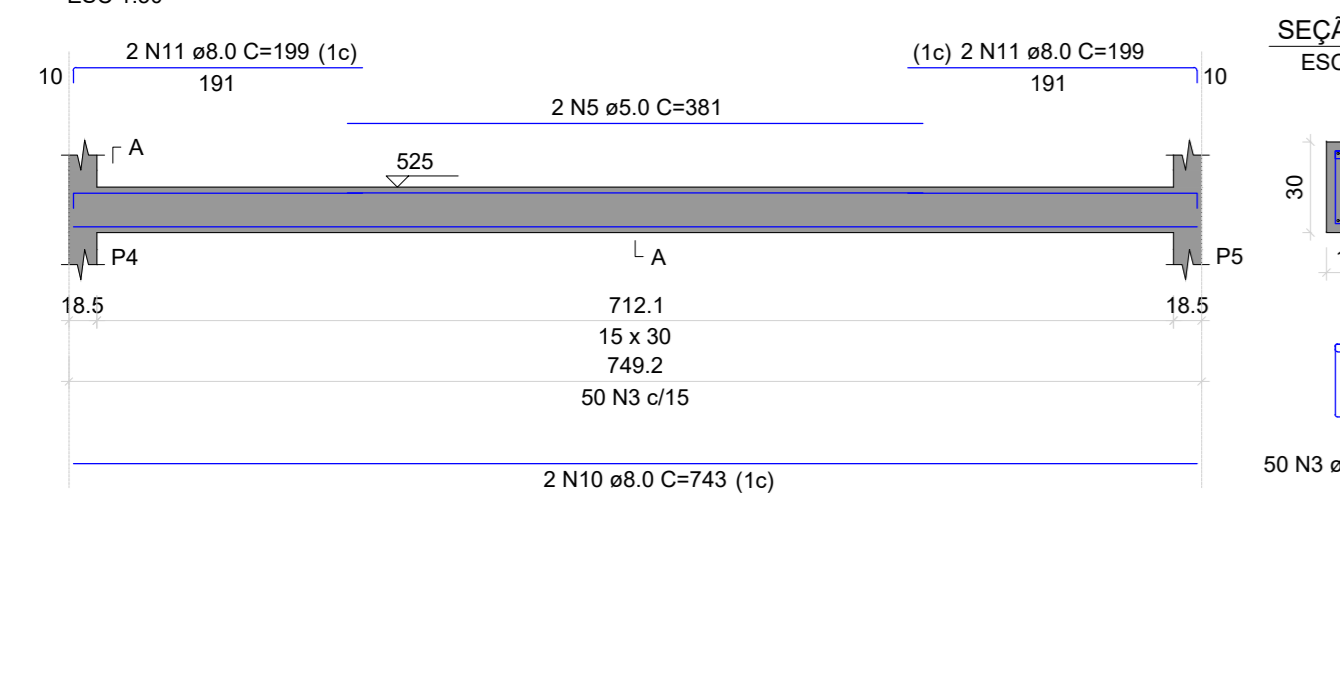


Vigas Terreo

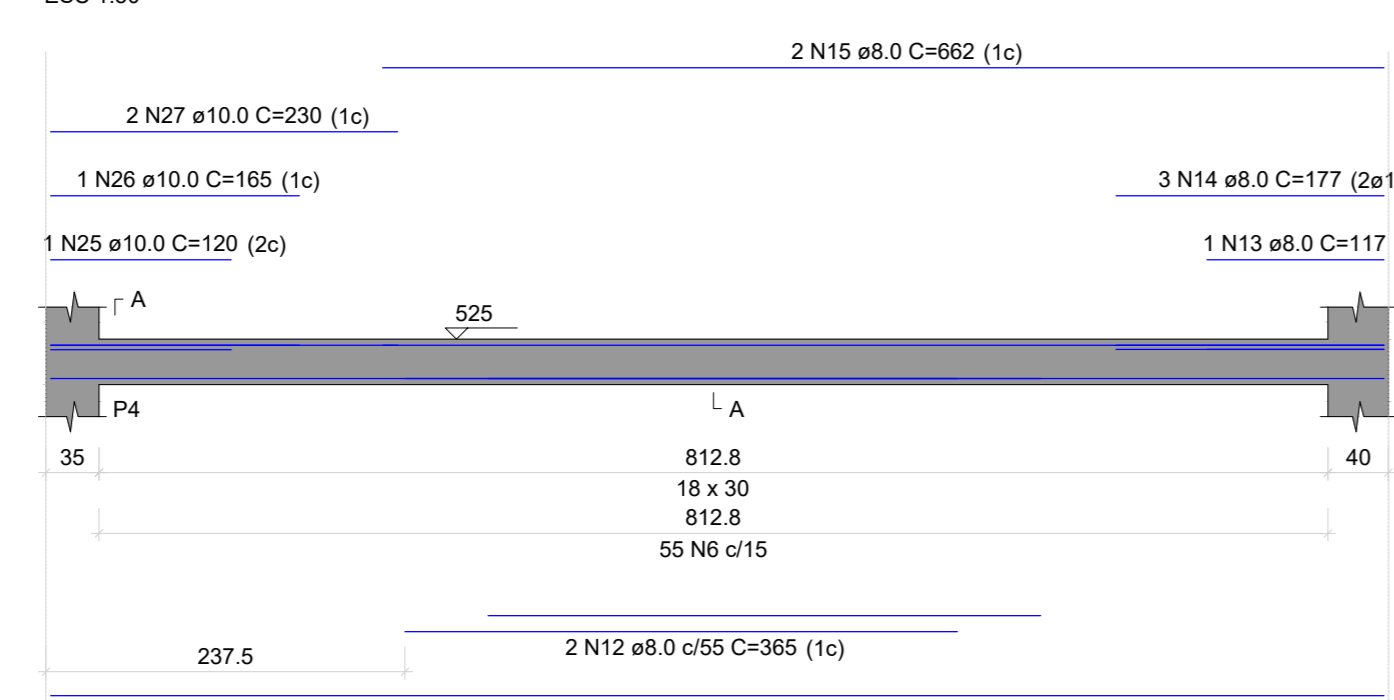
V1



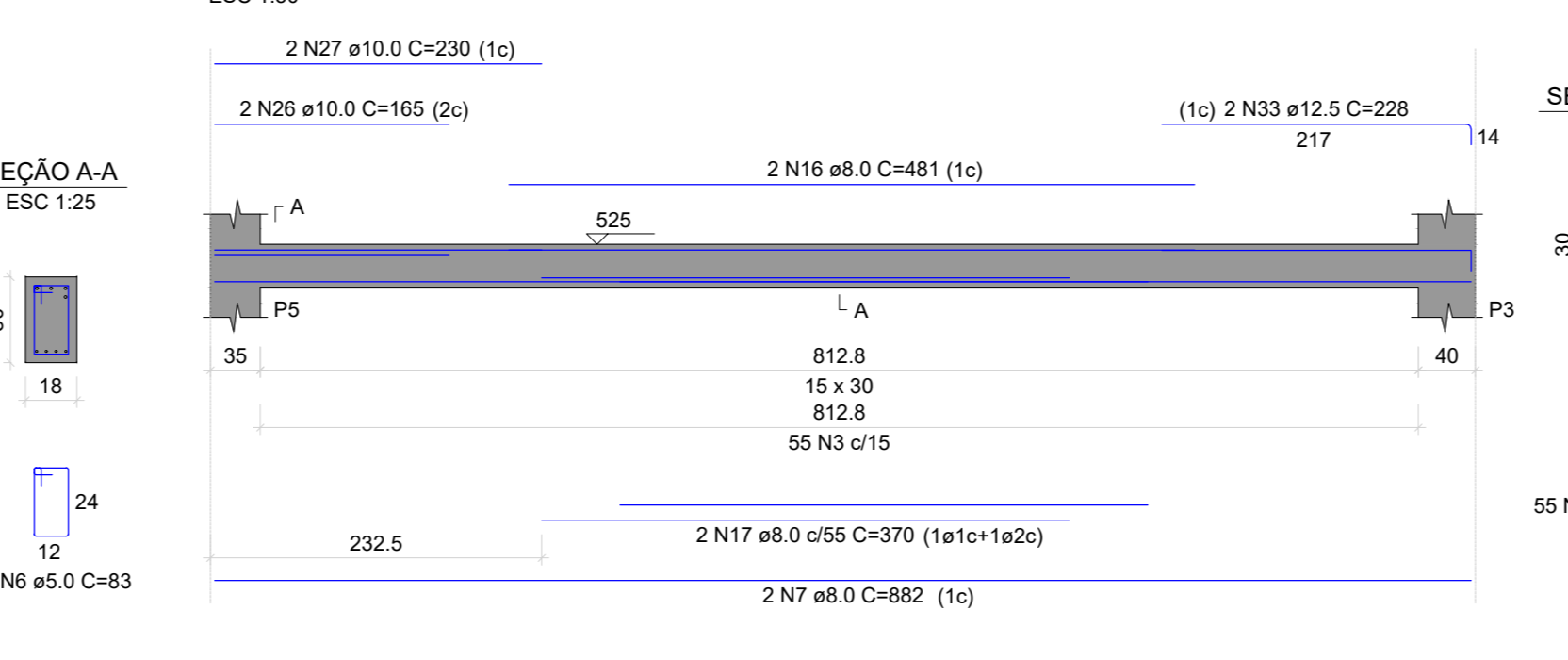
V2



V3

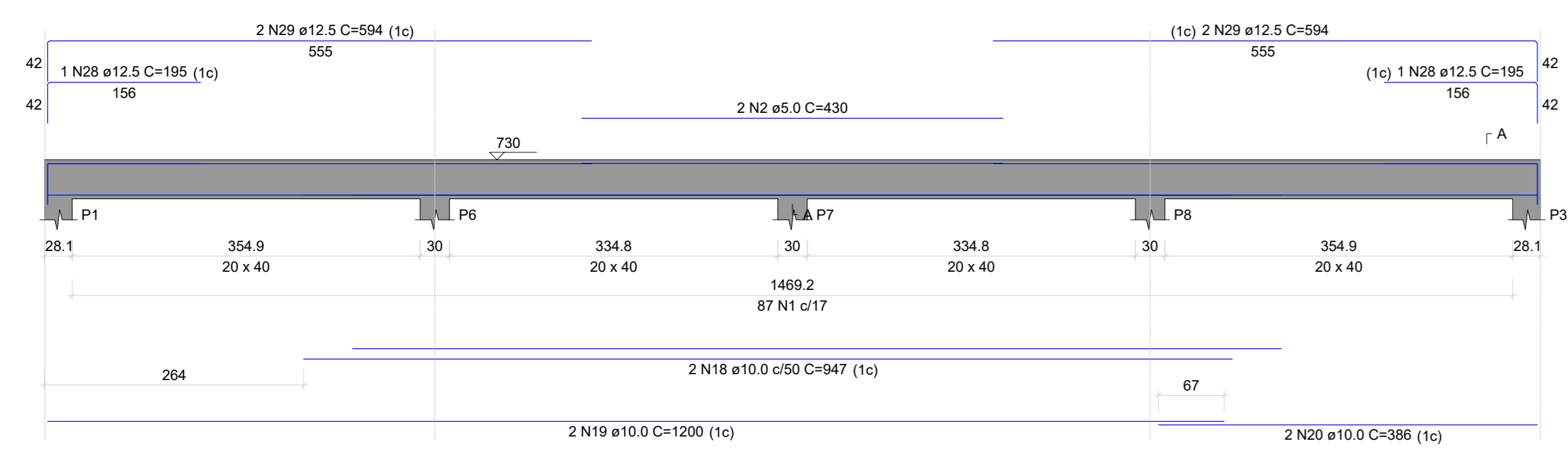


V4

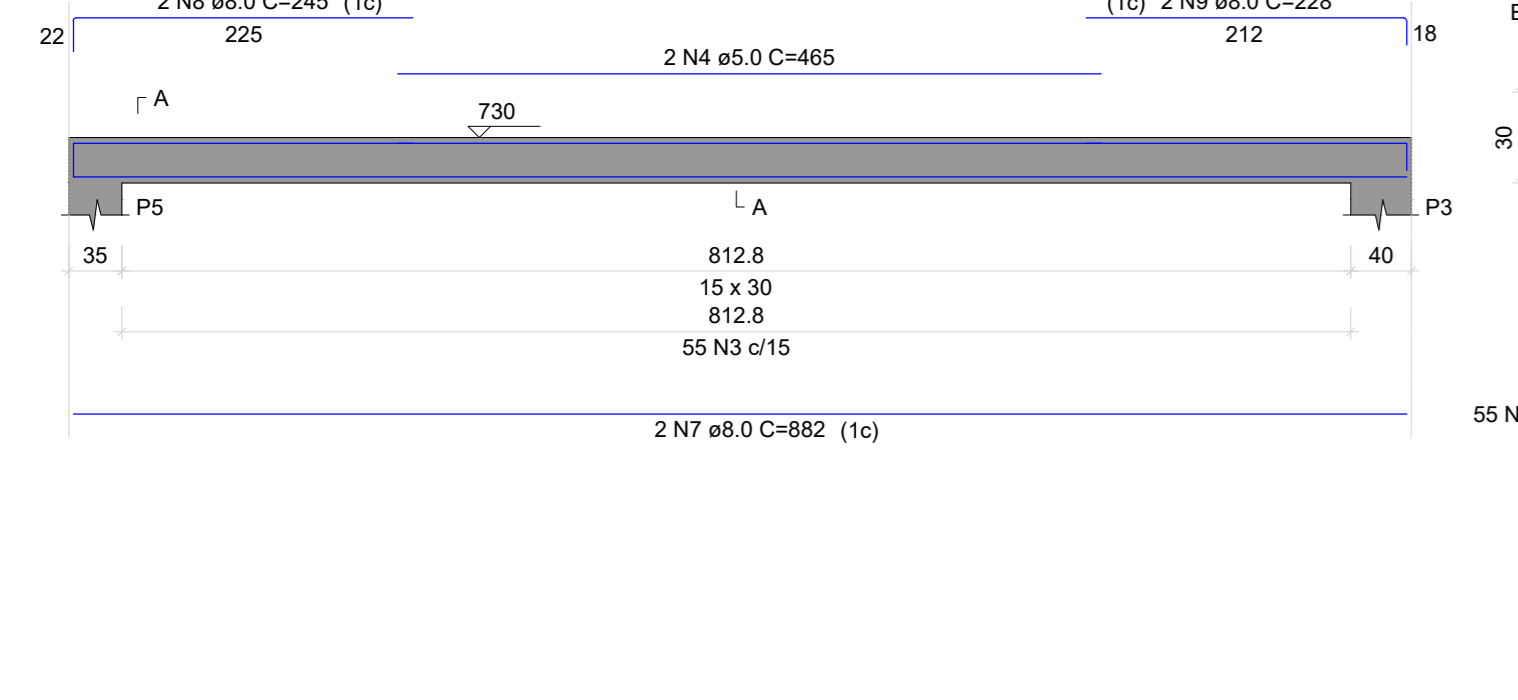


Vigas Platibanda

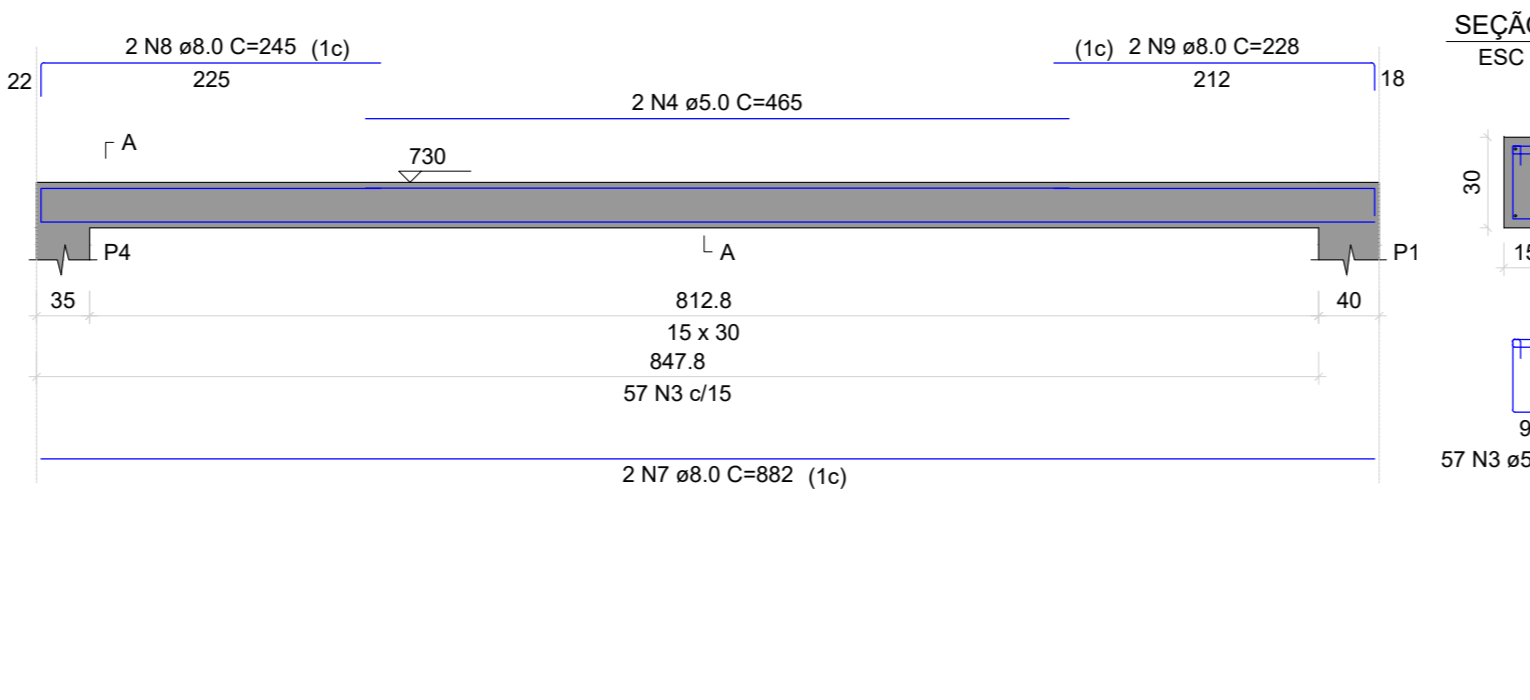
VP1



VP3



VP2



RELAÇÃO DO AÇO

CASO	N	DIAM (mm)	QUANT	C.UMET (cm)	C.TOTAL (cm)
1	1	8.0	2	435	870
1	2	8.0	2	435	870
1	3	8.0	2	435	870
1	4	8.0	2	435	870
1	5	8.0	2	435	870
1	6	8.0	2	435	870
1	7	8.0	2	435	870
1	8	8.0	2	435	870
1	9	8.0	2	435	870
1	10	8.0	2	435	870
1	11	8.0	2	435	870
1	12	8.0	2	435	870
1	13	8.0	2	435	870
1	14	8.0	2	435	870
1	15	8.0	2	435	870
1	16	8.0	2	435	870
1	17	8.0	2	435	870
1	18	8.0	2	435	870
1	19	8.0	2	435	870
1	20	8.0	2	435	870
1	21	8.0	2	435	870
1	22	8.0	2	435	870
1	23	8.0	2	435	870
1	24	8.0	2	435	870
1	25	8.0	2	435	870
1	26	8.0	2	435	870
1	27	8.0	2	435	870
1	28	8.0	2	435	870
1	29	8.0	2	435	870
1	30	8.0	2	435	870
1	31	8.0	2	435	870

PREFEITURA: BOMBEIRO OU NATURALIN:

OBRA: ILUMINAÇÃO PRAÇA SÃO PEDRO
 PROPRIETÁRIO: PREFEITURA MUNICIPAL DE ANANÁS
 CNPJ/CNP: 02.673.002/0001-77
 ENDEREÇO: Centro - Ananás-TO Latitude: 6°22'2.36" Longitude: 48° 43'2.92"

PROJETO ESTRUTURAL Data: 02/02

CONTEUDO:
 Vigas baldrame;
 Vigas terreo;
 Vigas platibanda;
 Pilares terreo;

TERRENO:
 Área do terreno: 10,02276 m²

ESCALA: Como Indicado
 DESENHO: DAVID WANDERSON
 DATA: 21/07/2022

Autor: Marcos Oliveira da Silva
 Engenheiro Civil
 CREA 313.250-D/TO

Nome do arquivo: EST_PALCO.dwg
 DIREITOS AUTORAIS RESERVADOS

