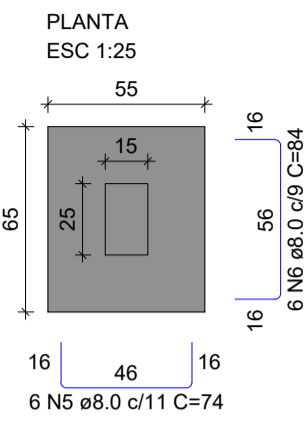
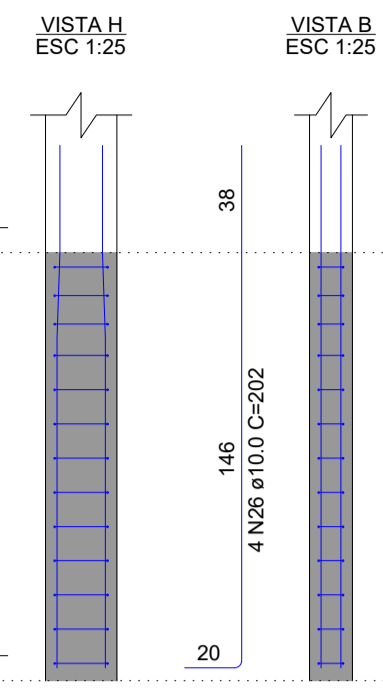
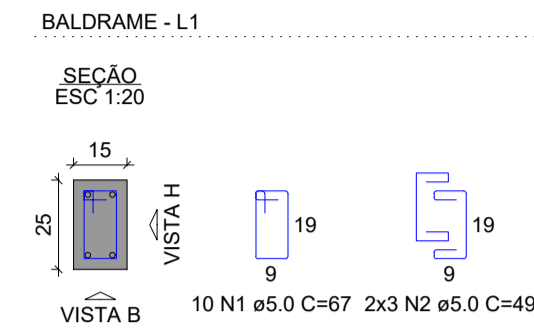
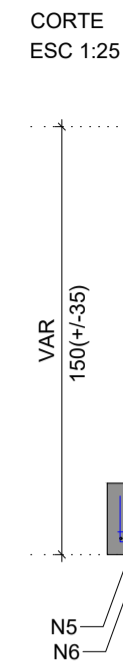


S1=S2=S3=S4=S5=S6=S7=S8=S9=S10=S11=S12=S13

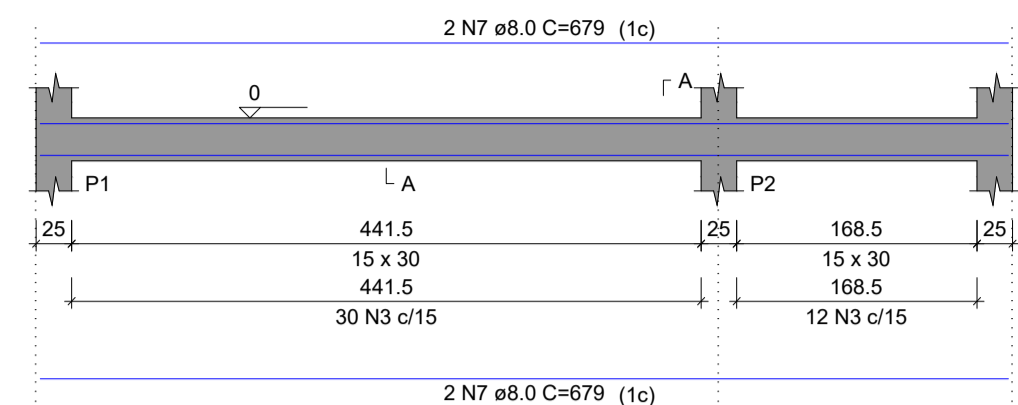


6 N5 ø8.0 c/11 C=74  
Solo com capacidade de suporte > 2.00 kgf/cm²  
Solo compactado sobre a sapata peso específico > 1600.00 kgf/m³

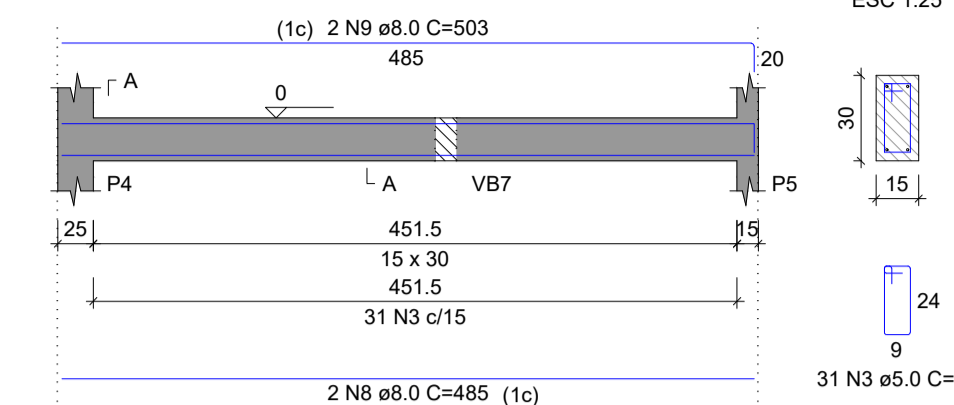
P1=P2=P3=P4=P5=P6=P7=P8=P9=P10=P11=P12=P13



VB1 ESC 1:50



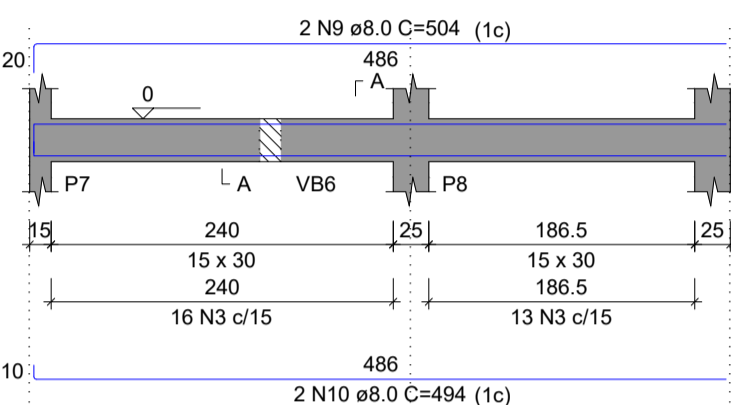
VB2 ESC 1:50



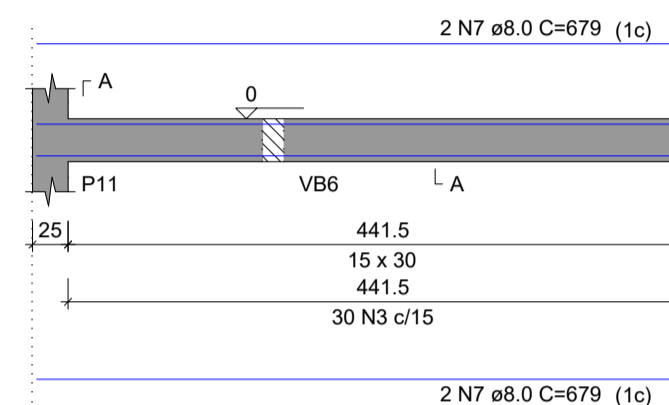
RELAÇÃO DO AÇO

AÇO	N	DIAM (mm)	QUANT	C.UNIT (cm)	C.TOTAL (cm)
13xP1-L2	1	5.0	429	67	28743
VB1-L1	2	5.0	156	49	7644
VB4-L1	3	5.0	540	77	41580
VB7-L1	4	5.0	2	256	512
VB10-L1	5	8.0	78	74	5772
VC4-L2	6	8.0	78	84	6552
VC6-L2	7	8.0	12	679	8148
VC7-L2	8	8.0	4	485	1940
	9	8.0	4	503	2012
	10	8.0	4	494	1976
	11	8.0	2	804	1608
	12	8.0	6	840	5040
	13	8.0	6	324	1944
	14	8.0	6	360	2160
	15	8.0	4	182	728
	16	8.0	4	214	856
	17	8.0	2	332	664
	18	8.0	2	342	684
	19	8.0	2	820	1640
	20	8.0	4	715	2860
	21	8.0	2	157	314
	22	8.0	2	127	254
	23	8.0	2	522	1044
	24	8.0	2	812	1624
	25	10.0	52	297	15444
	26	10.0	52	202	10504

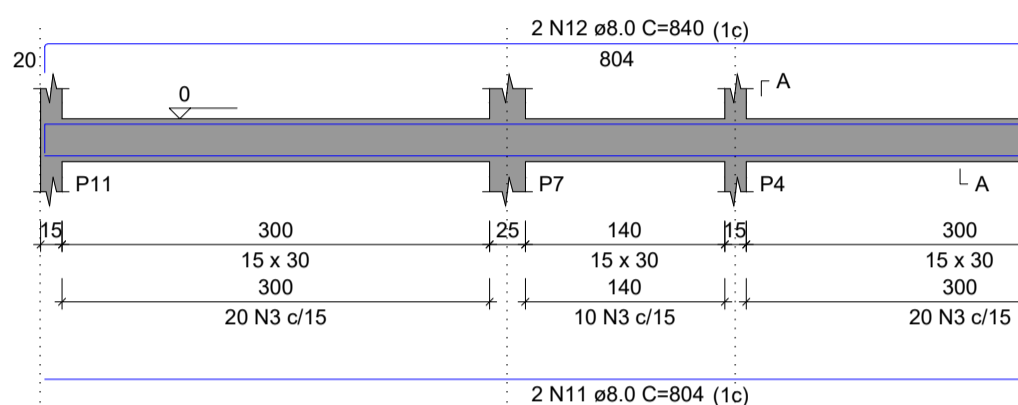
VB3 ESC 1:50



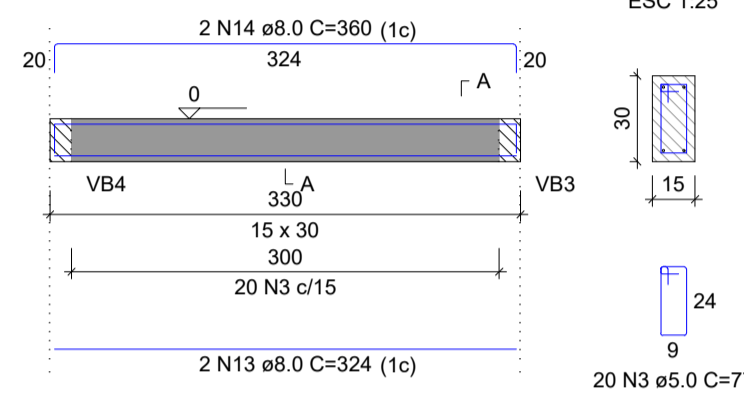
VB4 ESC 1:50



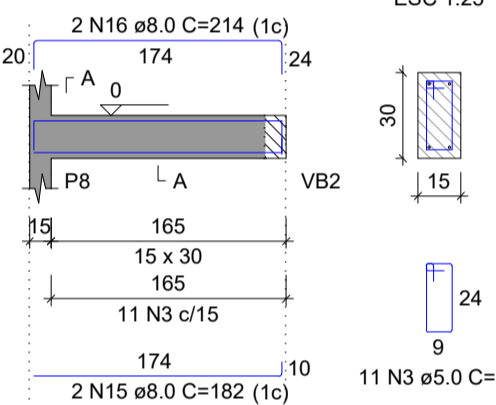
VB5 ESC 1:50



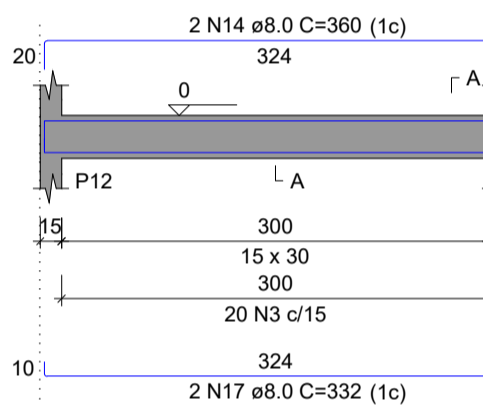
VB6 ESC 1:50



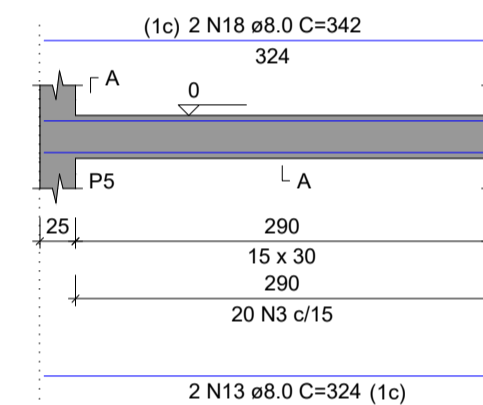
VB7 ESC 1:50



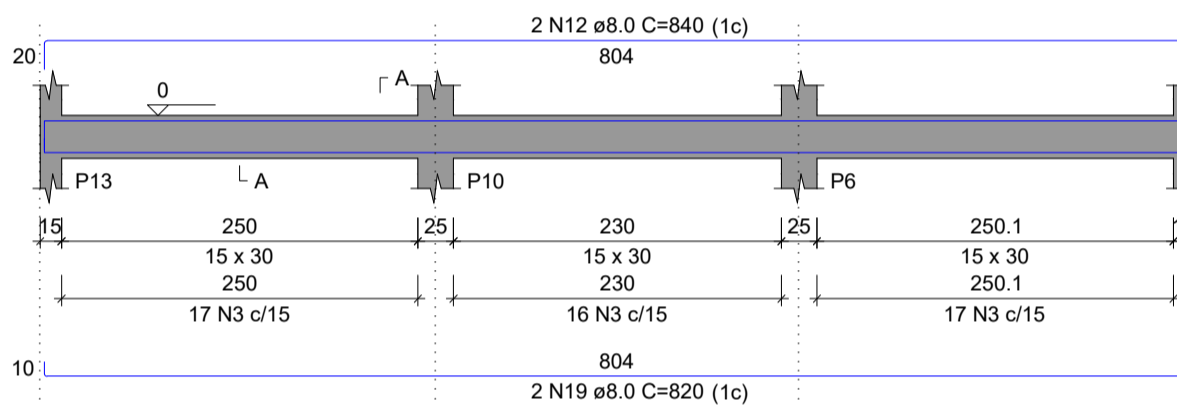
VB8 ESC 1:50



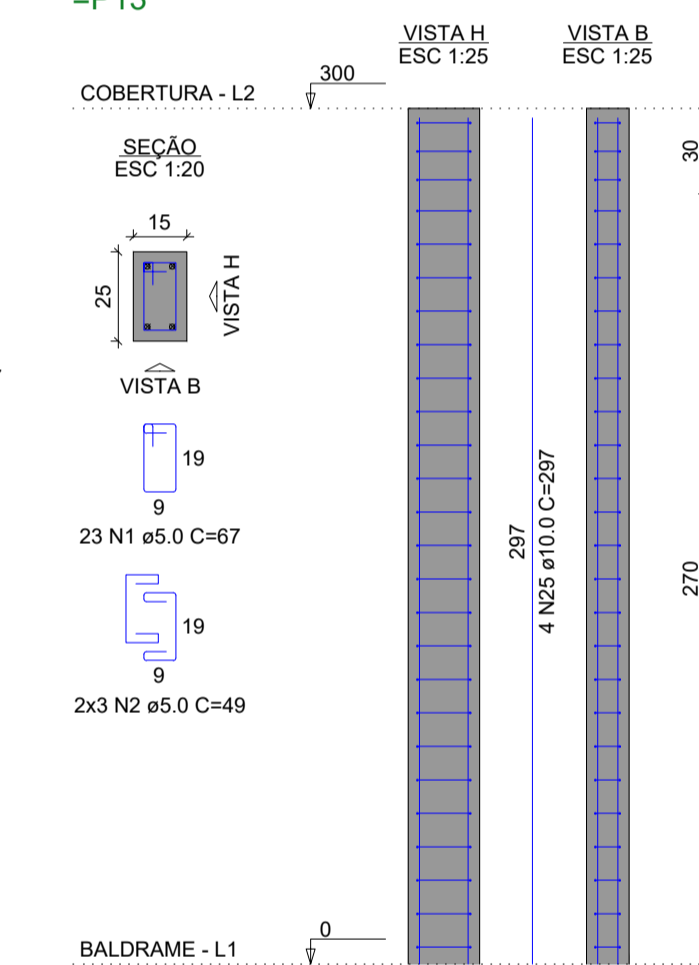
VB9 ESC 1:50



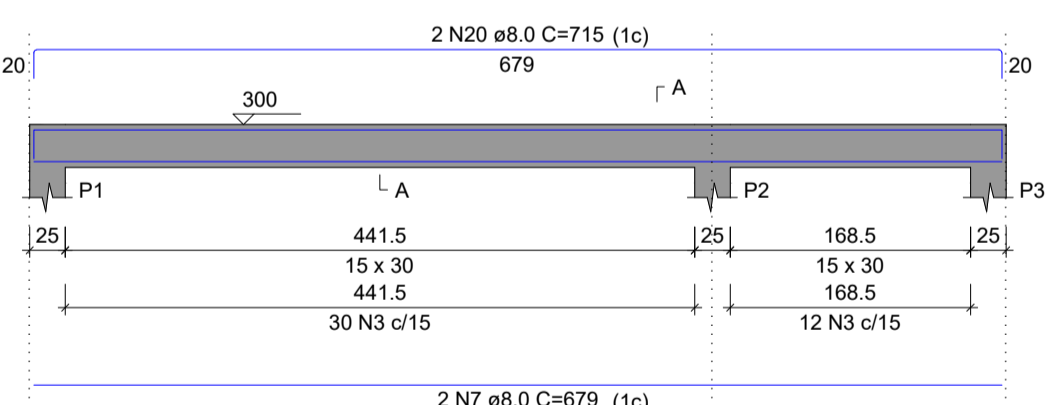
VB10 ESC 1:50



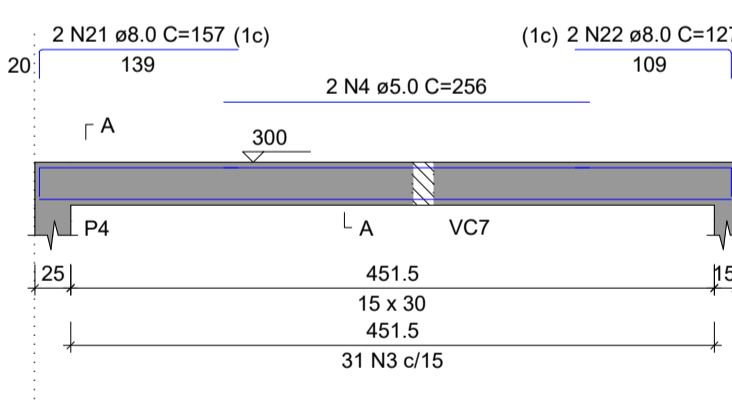
P1=P2=P3=P4=P5=P6=P7=P8=P9=P10=P11=P12=P13



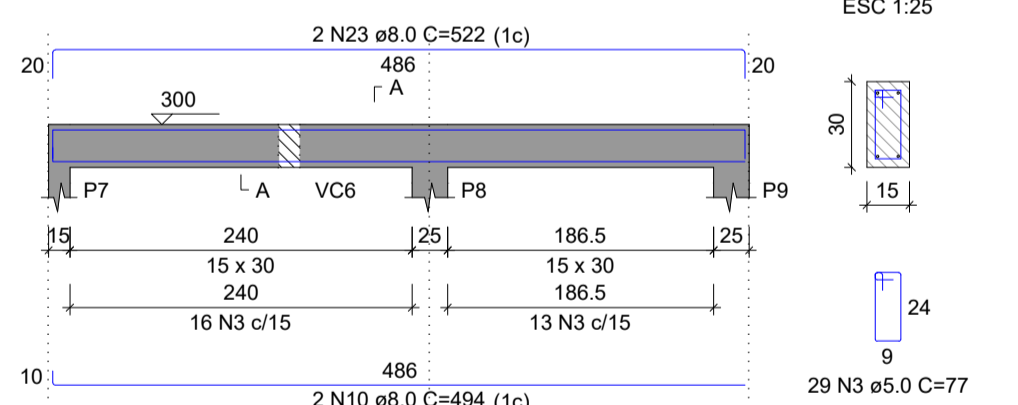
VC1 ESC 1:50



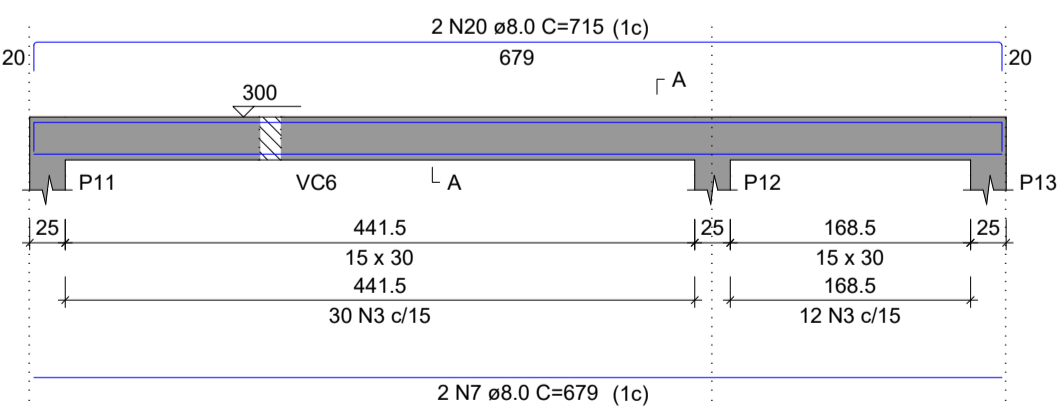
VC2 ESC 1:50



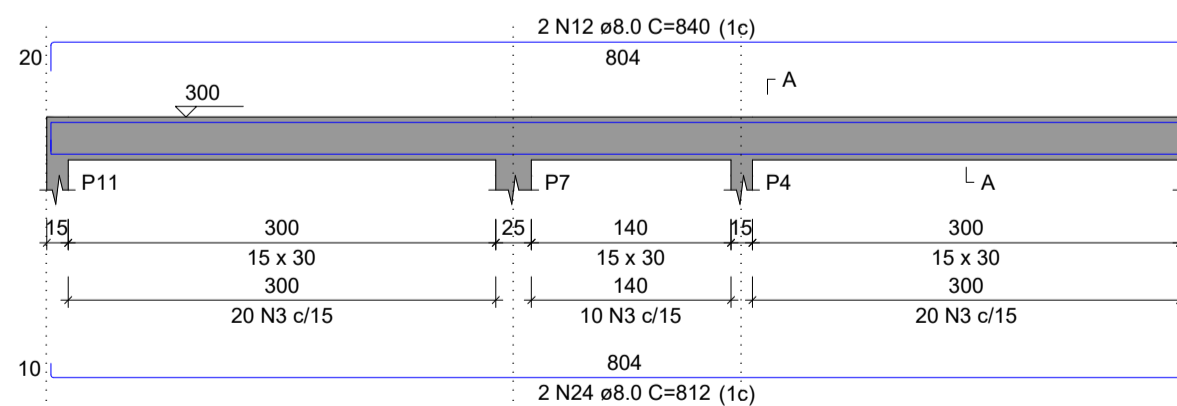
VC3 ESC 1:50



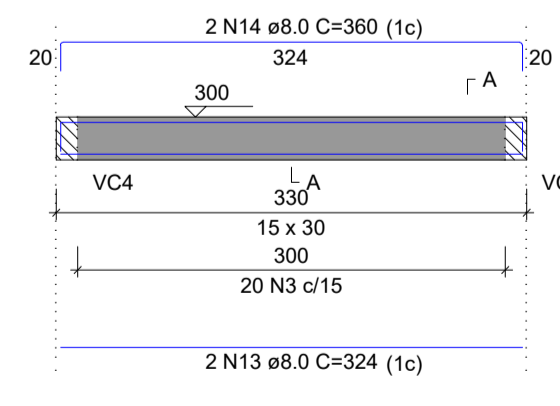
VC4 ESC 1:50



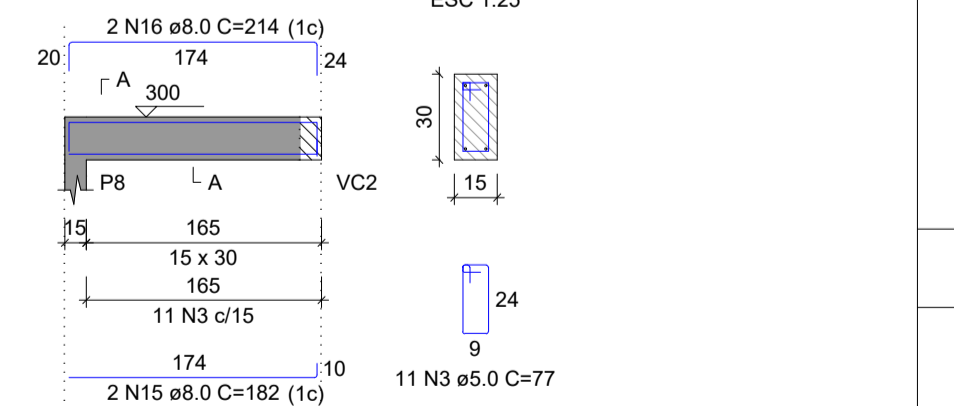
VC5 ESC 1:50



VC6 ESC 1:50



VC7 ESC 1:50



PREFEITURA

CREA

BOMBEIRO OU NATURATINS

PROJETO: **ESTRUTURAL - SECRETARIA** FOLHA: **02/02**

OBRA: CONSTRUÇÃO DA GARAGEM MUNICIPAL DE ANANÁS

PROPRIETÁRIO: PREFEITURA MUNICIPAL DE ANANÁS - TO

CNPJ: 19.870.299/0001-63

ENDEREÇO: AVENIDA BETEL S/N

QUADRO DE ÁREAS

ASSINATURA PROPRIETÁRIO: PREFEITURA MUNICIPAL DE ANANÁS - TO

AUTOR PROJETO CREA: 313.250/D-TO ENGENHEIRO CIVIL: MARCOS OLIVEIRA DA SILVA

ESCALA: INDICADA DESENHO: MARCOS OLIVEIRA DATA: JUNHO DE 2020

CONTEÚDO: